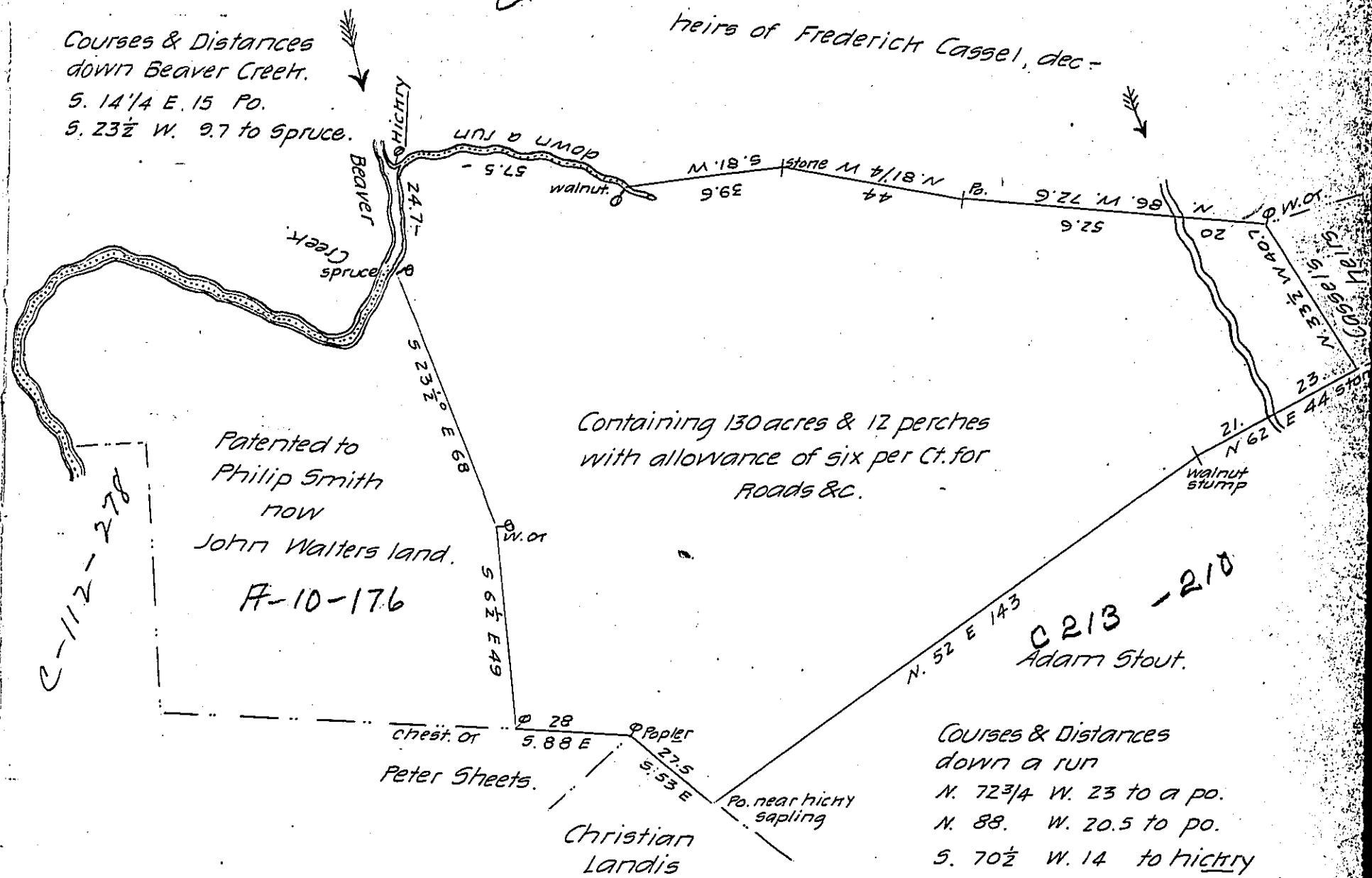


FORM No. 1.

C-205-217

Courses & Distances down Beaver Creek.

S. 14 1/4 E. 15 Po.
S. 23 1/2 W. 9.7 to Spruce.



Surveyed October the 5th A.D 1833 for Jacob Horner the above described tract of land containing 130 acres & 12 perches & the allowance of six per cent for roads &c. being part of a larger tract of land granted by (Warrant of Proprietaries) to Mathew Taylor dated 30th of March 1753. Situate in West Harrover township, Dauphin County

Joseph Gray D.S.

To Jacob Spangler Esqr.

Surveyor General.

IN TESTIMONY that the above is a copy of the original remaining on file in the Department of Internal Affairs of Pennsylvania, made conformably to an Act of Assembly approved the 16th day of February 1833, I have hereunto set my hand and caused the Seal of said Department to be affixed at Harrisburg, this twenty-sixth day of April 1907

Lea C. Brown
Secretary of Internal Affairs.